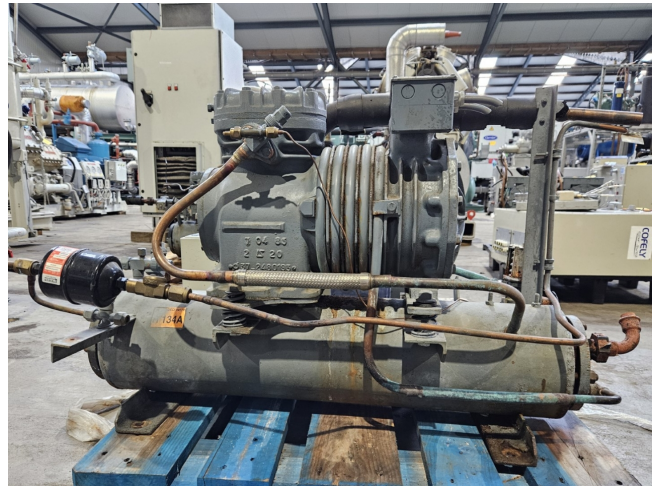


DWM DLED-201/EWL/000 Condensing unit

Specifications

Brand	DWM
Type	DLED-201/EWL/000 Condensing unit
Refrigerant	Freon
kW at -20°C/+40°C	4,7
kW at -30°C/+40°C	2,4
kW at -40°C/+40°C	0,9
kW at -45°C/+40°C	0,4
Pressure safety switches	✓
Hp/Lp/Op	
Pressure gauges	✓
Hp/Lp/Op	
Liquid line filter drier	✓
Sight Glass	✓
Control panel	✓
m3 / h	9,9
Condensing Unit	✓



Description

Used DWM DLED-201/EWL/000 Condensing unit

Used DWM WR4-LE-200H-EWL water cooled condensing unit on Freon. Complete with a DWM DLED-201/EWL/000 semi-hermetic reciprocating compressor, DWM WR4 shell and tube condenser, liquid line filter drier, pressure and safety switches/gauges and a control cabinet. The compressor has a displacement of 9,9 m³/h.

*Why choose for HOSBV? Were not only the largest used refrigeration specialist in Europe, but also, we deliver all equipment including an extensive test, warranty and industrial cleaning.

*Optional we can also perform a new



paint job and arrange the logistics.

